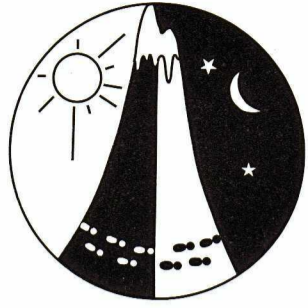


The "Too Easy" Rogaine



Setters and Vettors

Jeff Conrades
Brian Wade
Ray & Dianne Parks

Spring 12 Hour Rogaine 23 October 2010

Celebrating WARA's 30th Anniversary
and 139 magnificent rogaines

Western Australian Rogaining Association, PO Box 1201, Subiaco, WA, 6904

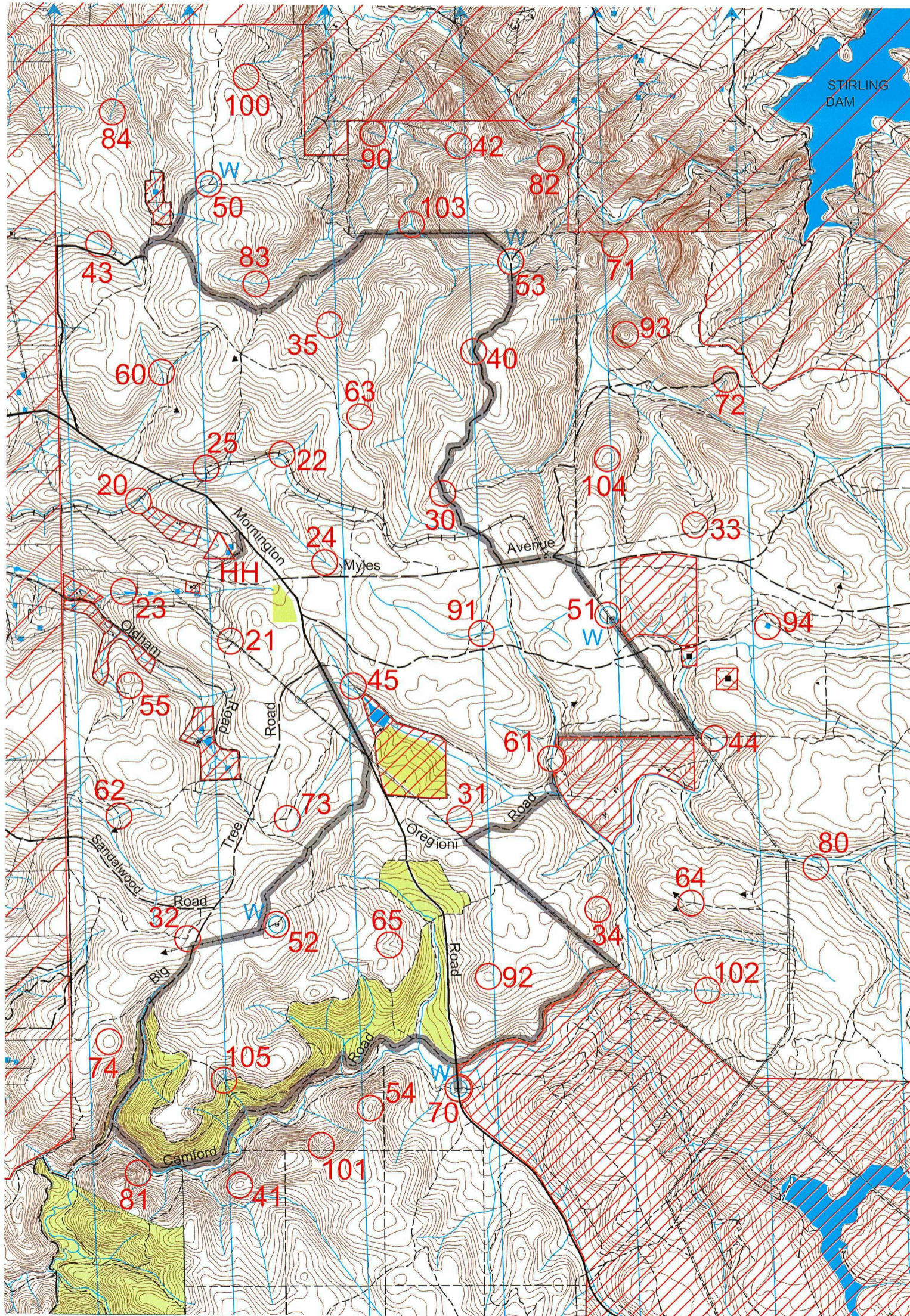
Thanks and appreciation to:

Mick & Glenys Chambers (Hash site)
Ian & Rhonda Staples
BHP Billiton Worsley Alumina Pty Ltd
Leon Price (DEC)
Steve Walkley (Water Corp)

Charlie Cherubino
Joe & Ann Impicciatore
Andrew Boaden
Mark Hebiton
Fieldon Pty Ltd

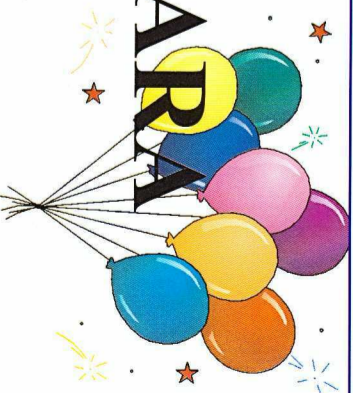
LEGEND

Buildings/Fixed Objects	■
Continuations	→
Control	○72
Contours	⌀
Dams	▭
Fences	—
Power Line	—
Hash House	△
Magnetic North Line	↗
Out of Bounds	▨
Road, Sealed	—
Road, Major Gravel	—
Track	—
Watercourse	—
Water Drop	○W
Plantation	▭
Patrolled Road	—
Formation (old railway)	++++



Rogaining Is Fun - Isn't It?

Happy 30th Anniversary WARA



This map was produced using OCAD 9 by the Western Australian Rogaining Association, wa.rogaine.asn.au.
Data supplied by Landgate and used under copy licence 393/93. Possession of this map does not give right of entry to this area.

SCALE 1:50,000, 5 metre contour interval



THE "TOO EASY" ROGAINE. WARA 12 Hour Spring Rogaine. 23rd October 2010. Celebrating 30 years of rogaing in WA.

Num	Description	Pts	Num	Description	Pts	Event Information
20	The Watercourse/Formation Intersection	20	62	The Track/Watercourse Intersection	60	Start: 1000 Saturday Finish: 2200 Saturday Hash House: Opens at 1600 Sat Closes at 2230 Sat Re Opens at 0600 Sun Closes at 0800 Sun Sunset: 1835 Sat Moonrise: 1858 Sat Late Penalty: 10 points per minute or part minute You will be LATE (no points) if later than 2230 Saturday Controls Used: 51 Total Points: 3000 Water Drops: 50, 51, 52, 53, 70
21	The Fence Corner, 15m @ 170 degrees	20	63	The Gully, a disused track	60	
22	The Formation/Creek Intersection	20	64	The Track Junction	60	
23	The Dam, north-west corner (Caution - hole in dam wall)	20	65	The Gully	70	
24	The Broad Gully	20	70	The Road/Track Junction, 30m @ 240 degrees (water drop)	70	
25	The Northern Track Bend	30	71	The Spur	70	
30	The Track Junction, 60m @ 235 degrees	30	72	The Gully	70	
31	The Watercourse	30	73	The Track Bend	70	
32	The Track Bend	30	74	The Knoll	80	
33	The Gully, a watercourse	30	80	The Track Intersection	80	
34	The Broad Spur	30	81	The Rocky Spur	80	
35	The Saddle	40	82	The Spur	80	
40	The Track Bend	40	83	The Watercourse	80	
41	The Knoll	40	84	The Watercourse	90	
42	A Rocky Knoll	40	90	The Watercourse	90	
43	The Watercourse	40	91	The Track/Watercourse Intersection	90	
44	The Track/Watercourse Intersection	40	92	The Broad Knoll	90	
45	The Fence Junction	50	93	The Knoll	90	
50	The Track Junction (water drop)	50	94	The Dam, east side	100	
51	The Track Junction (water drop)	50	100	The Gully, a watercourse	100	
52	The Communications Tower, south-east corner (water drop)	50	101	The Gully	100	
53	The Track Junction (water drop)	50	102	The Watercourse/Gully Junction	100	
54	The Knoll	50	103	The Watercourse Intersection	100	
55	The Saddle	60	104	The Broad Knoll	100	
60	The Watercourse	60	105	The Track Intersection	100	
61	The Track/Watercourse Intersection	60				

If a team member becomes sick or injured, please make your way to a water drop or a patrolled road which are indicated on the map.